

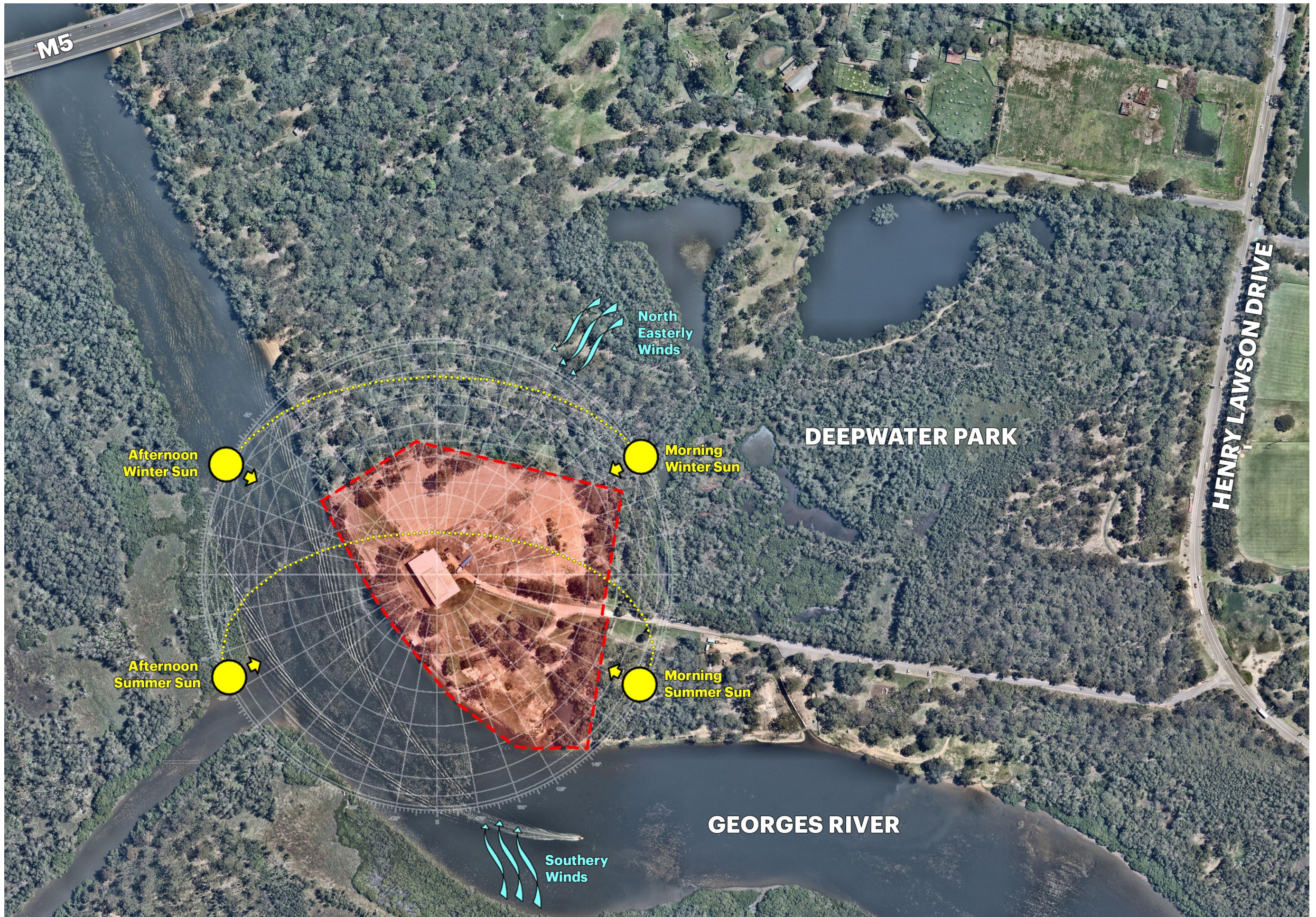
31 WEBSTER ST, MILPERRA

Layout ID	Layout Name	Scale
A00	Cover Page	
A01	3D Perspective 1	
A02	3D Perspective 2	
A03	Location Plan / Site Analysis	1:3000
A04	Site Plan	1:1000
A05	Demolition Ground Floor Plan	1:200
A06	Demolition Level 01 Plan	1:200
A07	Demolition Elevations	1:200
A08	Proposed Ground Floor Plan	1:200
A09	Proposed Level 01 Plan	1:200
A10	Proposed Mezzanine Plan	1:200
A11	Proposed Roof Plan	1:200
A12	Proposed Elevations 1	1:200
A13	Proposed Elevations 2	1:200
A14	Proposed Sections	1:200
A15	GFA Plan	1:500











Site Plan
1:1000

Rev
00

Description
DA Submission

Date
12/08/2024

DA SUBMISSION



Lippmann

Lippmann Partnership ABN 64 077 405 273
NSW Architects Registration Board No. 4656
570 Crown Street, Surry Hills, NSW, 2010

Project
31 Webster St, Milperra, NSW

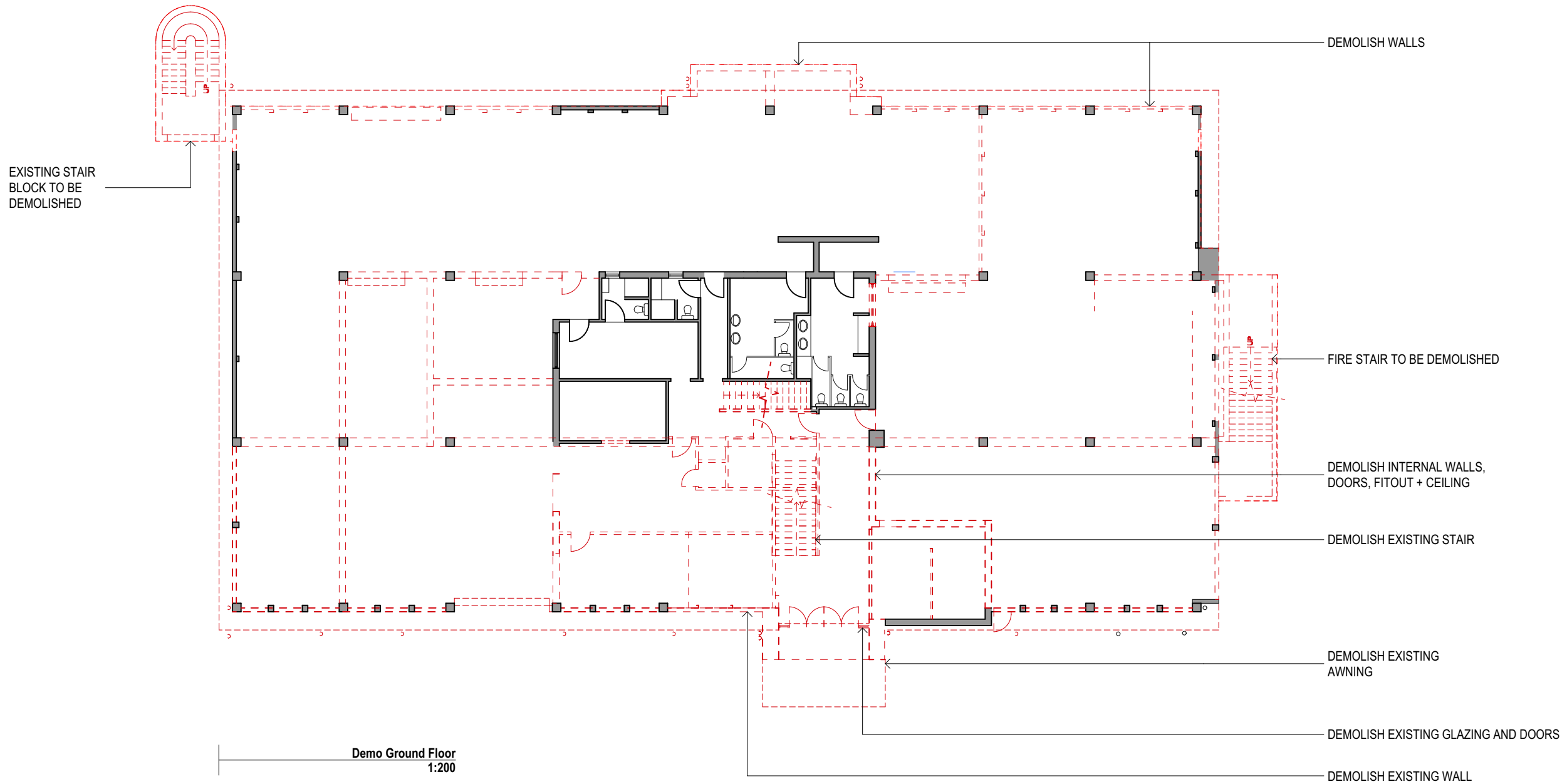
DO NOT SCALE OFF DRAWINGS. USE FIGURED DIMENSIONS ONLY. ALL
DIMENSIONS TO BE CHECKED ON SITE. THIS DRAWING IS COPYRIGHT AND
MAY NOT BE REPRODUCED WITHOUT WRITTEN CONSENT FROM LIPPMANN

Title
Site Plan

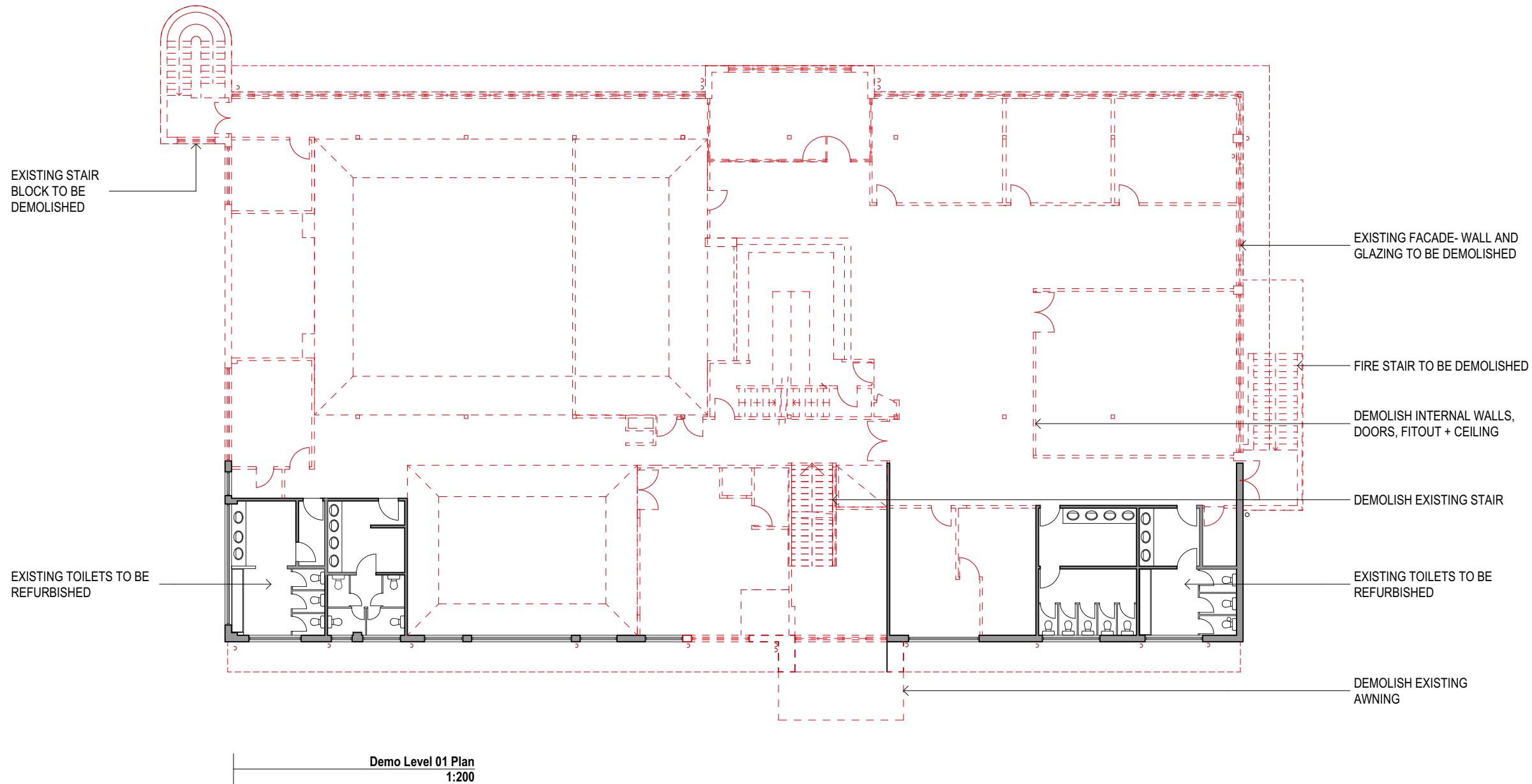
Scale
1:1000

Dwg
A04

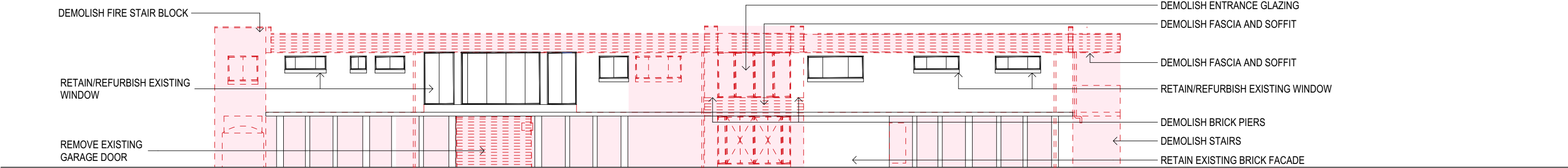
Rev
00



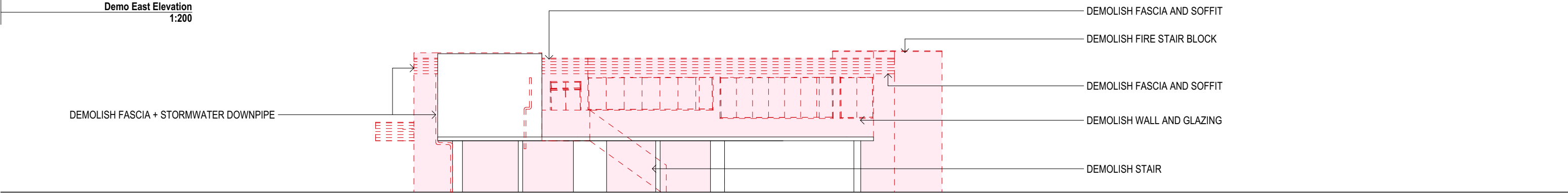
- EXISTING BUILDING RETAINED
- DEMOLITION



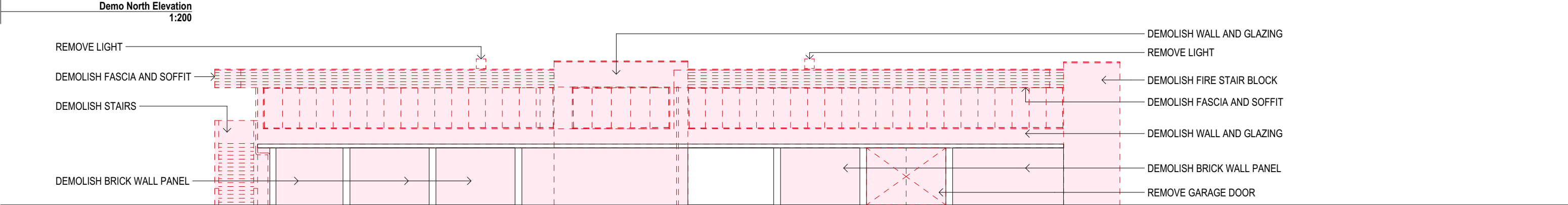
- EXISTING BUILDING RETAINED
- DEMOLITION



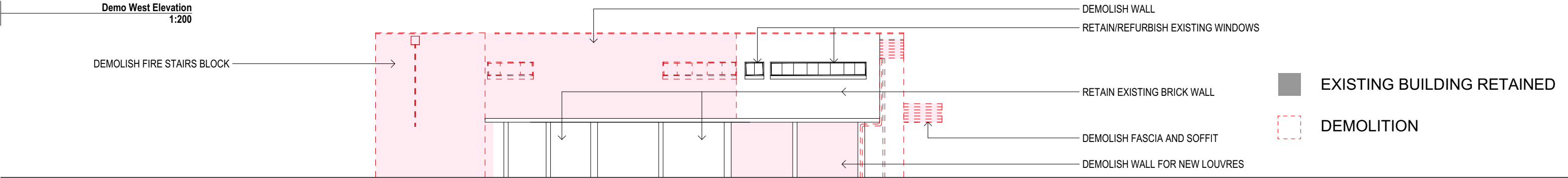
Demo East Elevation
1:200



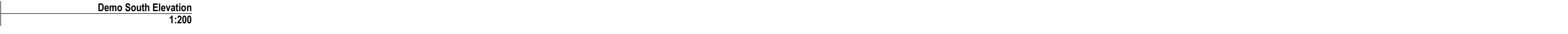
Demo North Elevation
1:200



Demo West Elevation
1:200



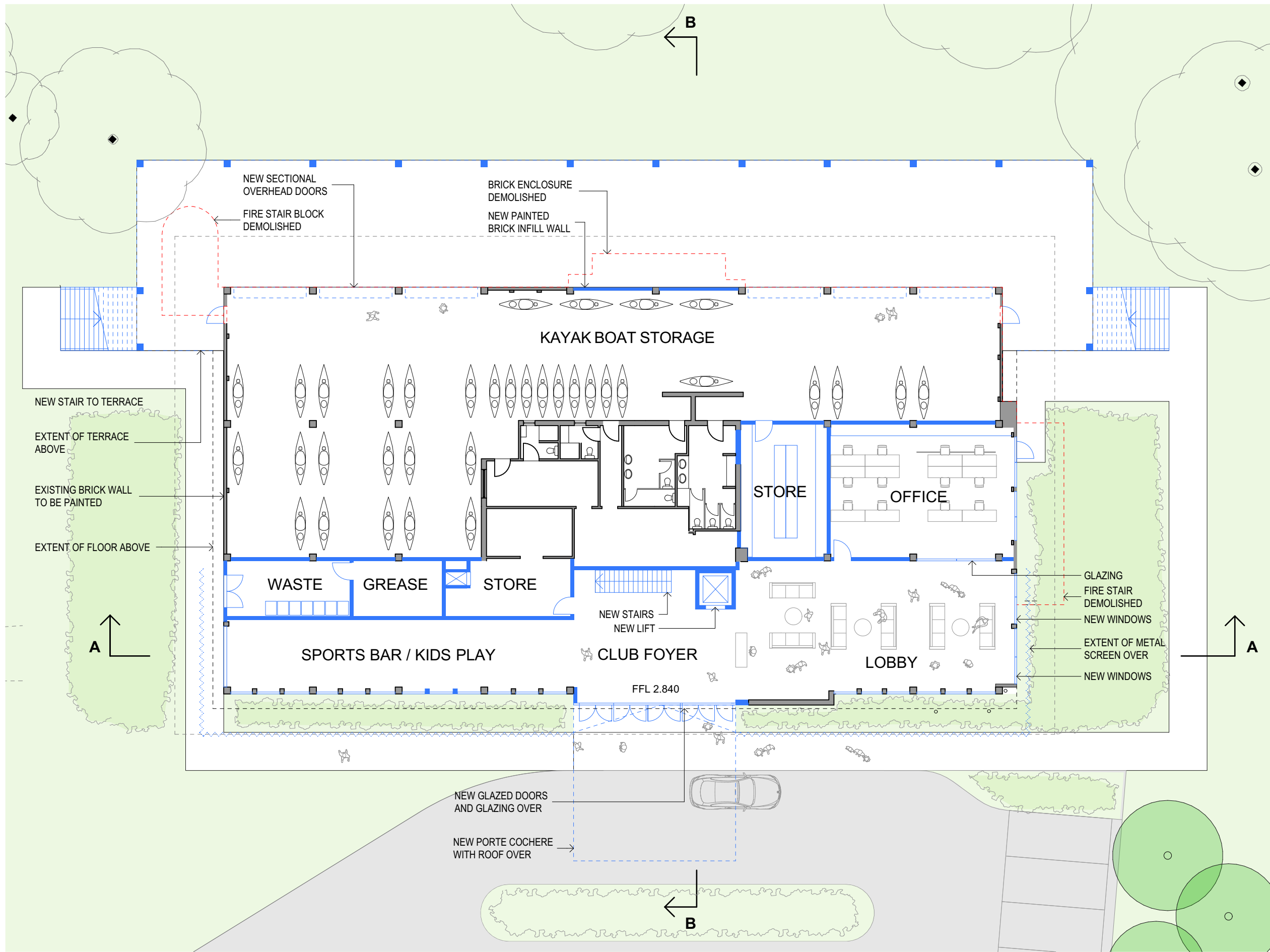
Demo South Elevation
1:200



EXISTING BUILDING RETAINED

DEMOLITION





Proposed Ground Floor Plan
1:200

Rev
00

Description
DA Submission

Date
12/08/2024

DA SUBMISSION



Lippmann

Lippmann Partnership - ABN 64 077 405 273
NSW Architects Registration Board No. 4656
570 Crown Street, Surry Hills, NSW, 2010

Project
31 Webster St, Milperra, NSW

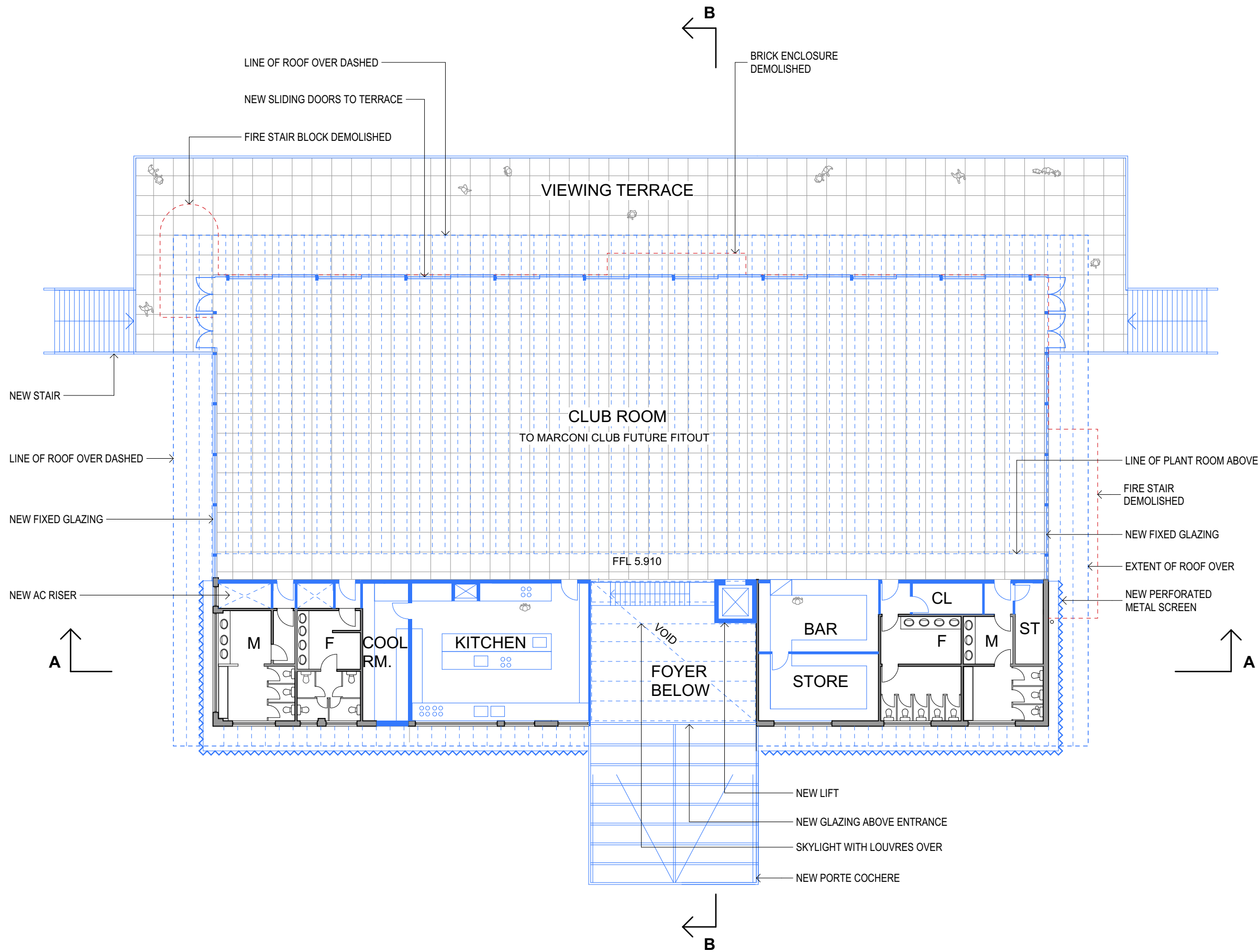
DO NOT SCALE OFF DRAWINGS. USE FIGURED DIMENSIONS ONLY. ALL
DIMENSIONS TO BE CHECKED ON SITE. THIS DRAWING IS COPYRIGHT AND
MAY NOT BE REPRODUCED WITHOUT WRITTEN CONSENT FROM LIPPMANN

Title
Proposed
Ground Floor
Plan

Scale
1:200

Dwg
A08

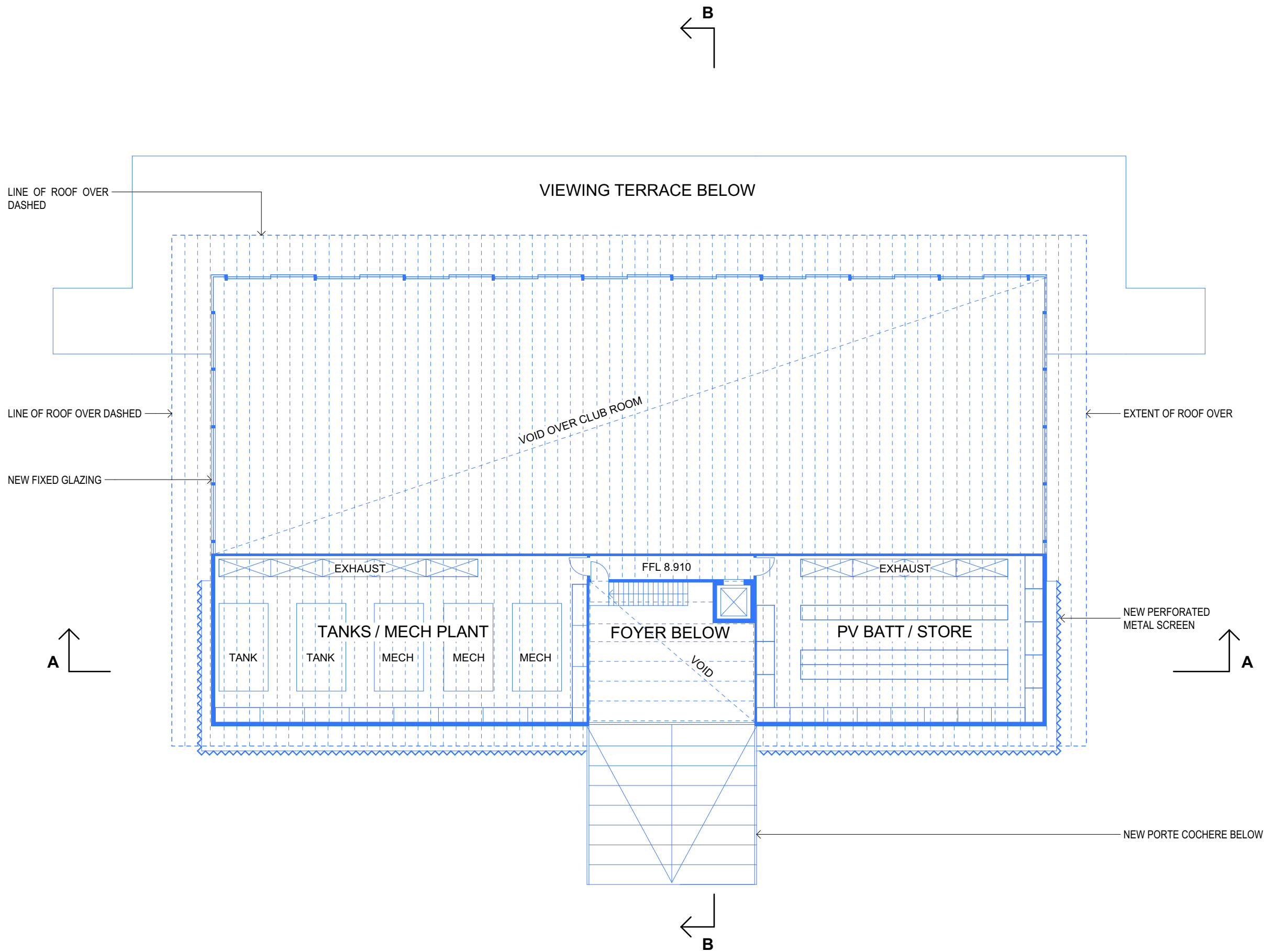
Rev
00



- DEMOLITION
- EXISTING BUILDING
- PROPOSED WORKS

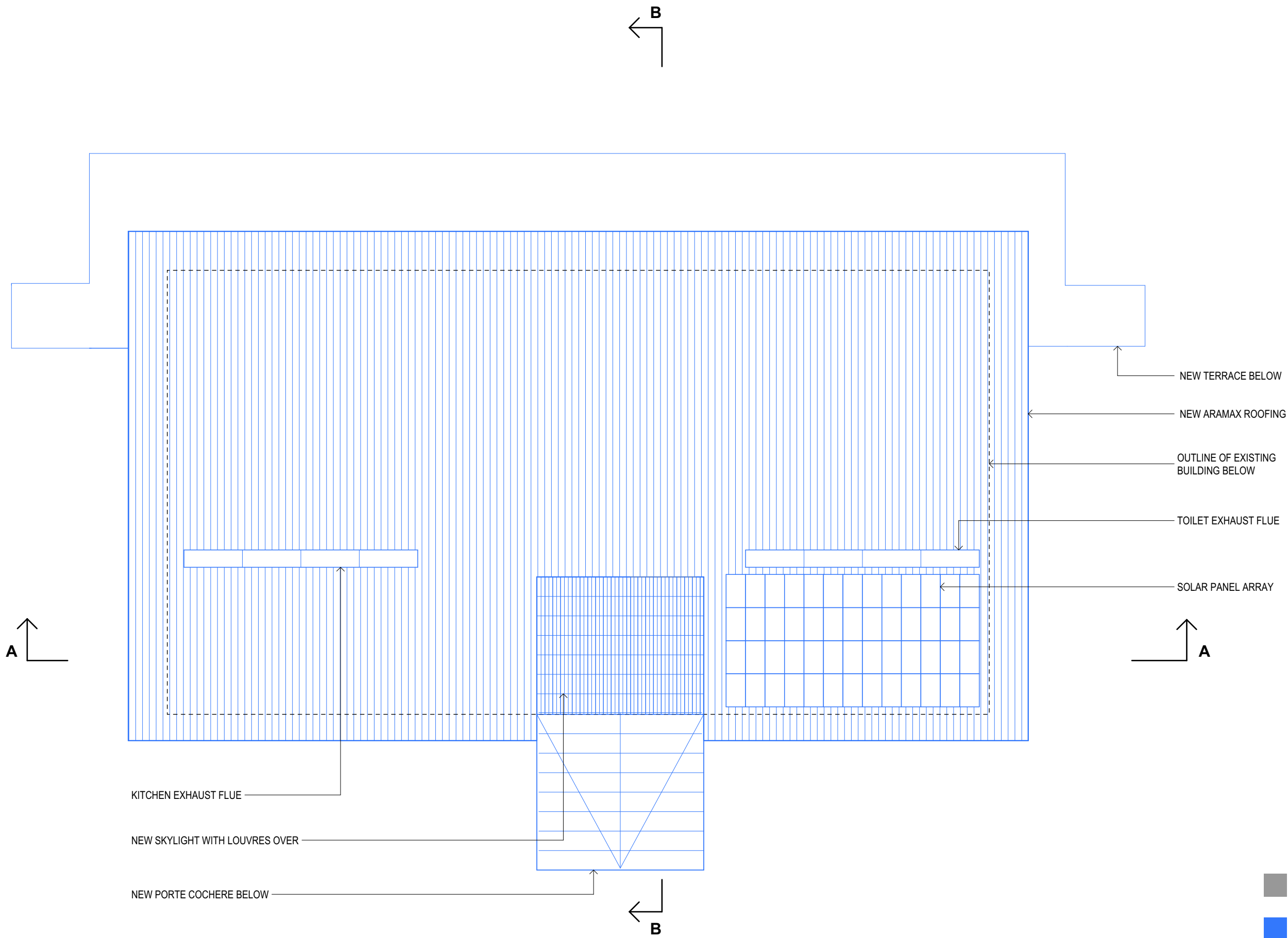
Proposed Level 01 Plan
1:200





Proposed Mezzanine Plan
1:200





Proposed Roof Plan
1:200

Rev
00

Description
DA Submission

Date
12/08/2024

DA SUBMISSION



Lippmann
Lippmann Partnership · ABN 64 077 405 273
NSW Architects Registration Board No. 4656
570 Crown Street, Surry Hills, NSW, 2010

Project
31 Webster St, Milperra, NSW

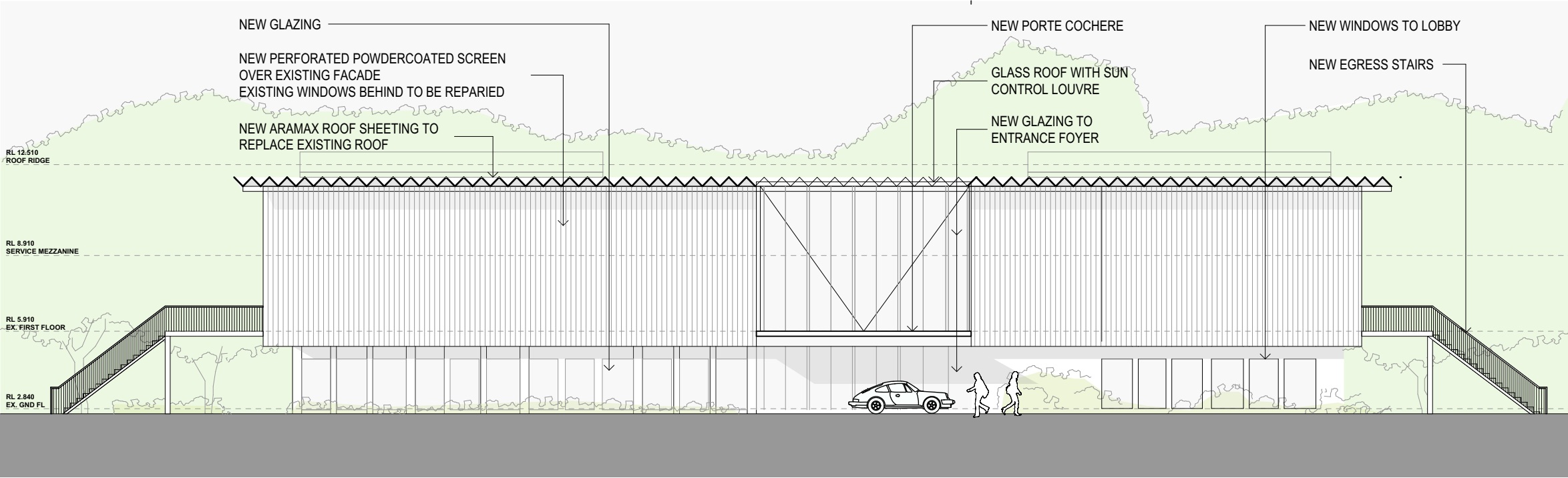
DO NOT SCALE OFF DRAWINGS. USE FIGURED DIMENSIONS ONLY. ALL
DIMENSIONS TO BE CHECKED ON SITE. THIS DRAWING IS COPYRIGHT AND
MAY NOT BE REPRODUCED WITHOUT WRITTEN CONSENT FROM LIPPMANN

Title
Proposed Roof
Plan

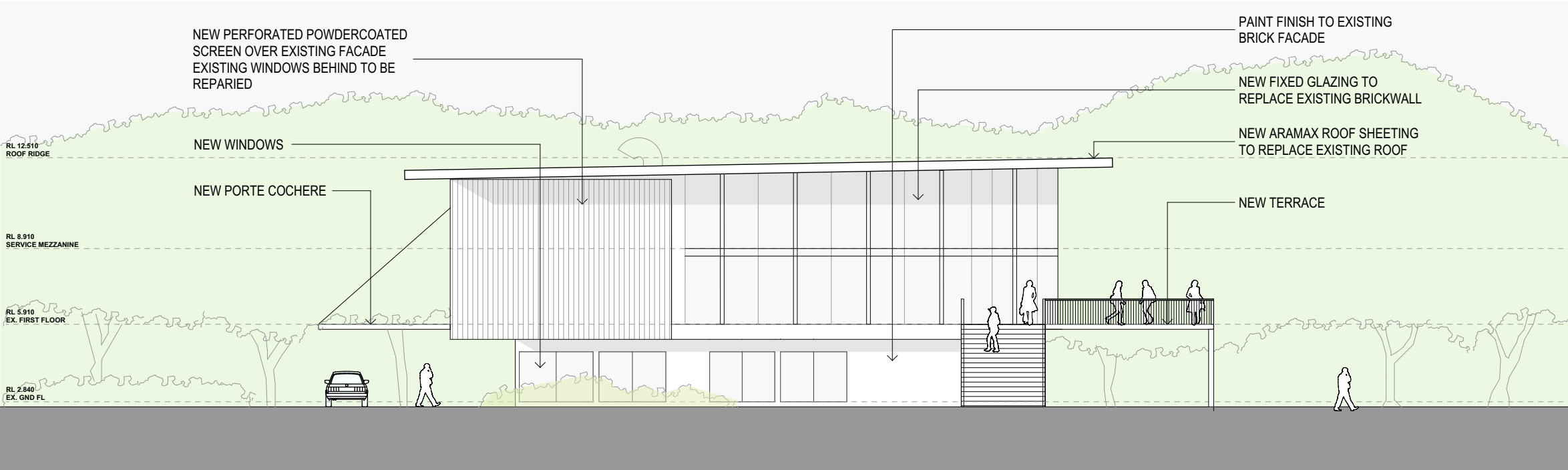
Scale
1:200

Dwg
A11

Rev
00



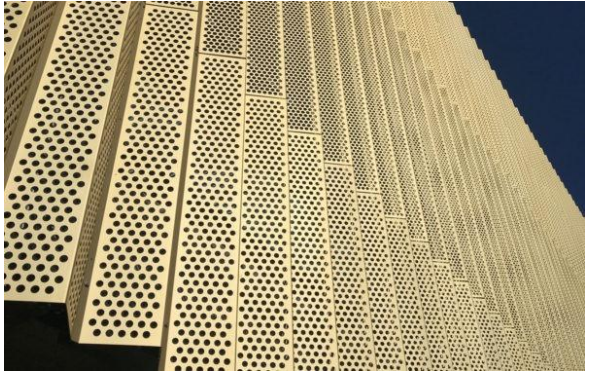
Proposed East Elevation
1:200



Proposed North Elevation
1:200



ARAMAX ROOF



TYPICAL SCREEN

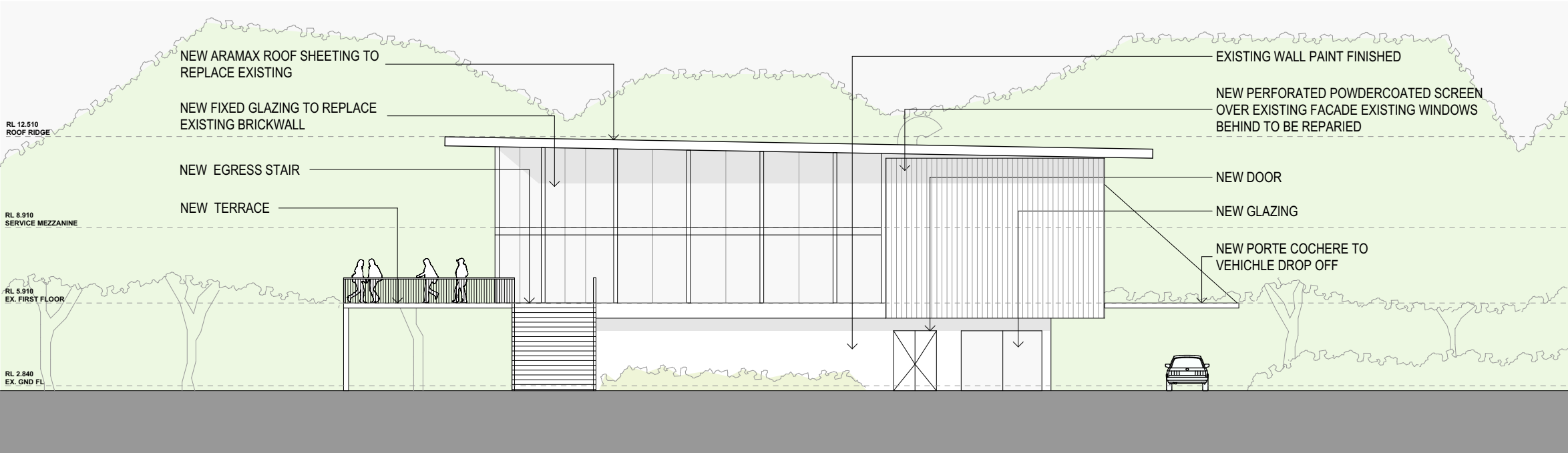


GLAZED WALL





Proposed West Elevation
1:200



Proposed South Elevation
1:200



ARAMAX ROOF

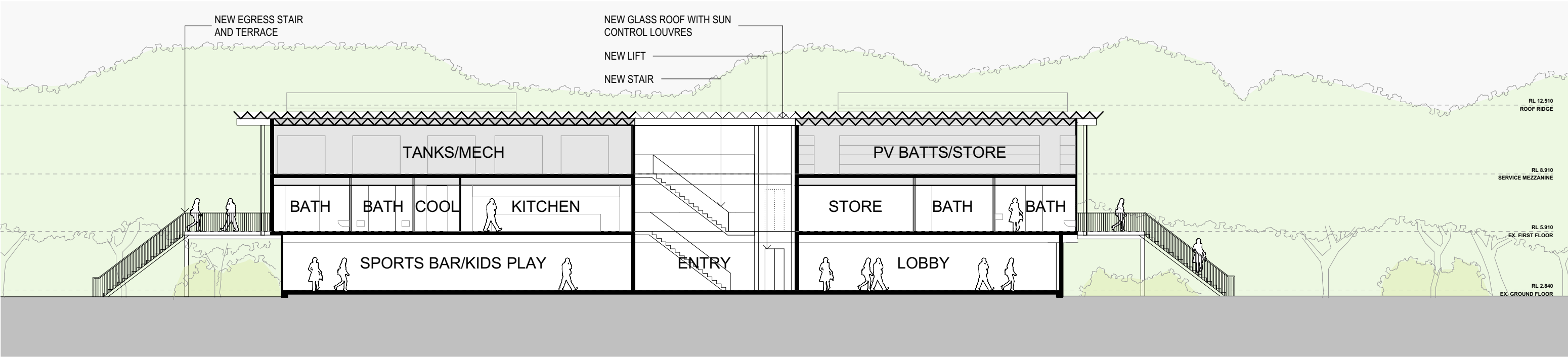


TYPICAL SCREEN

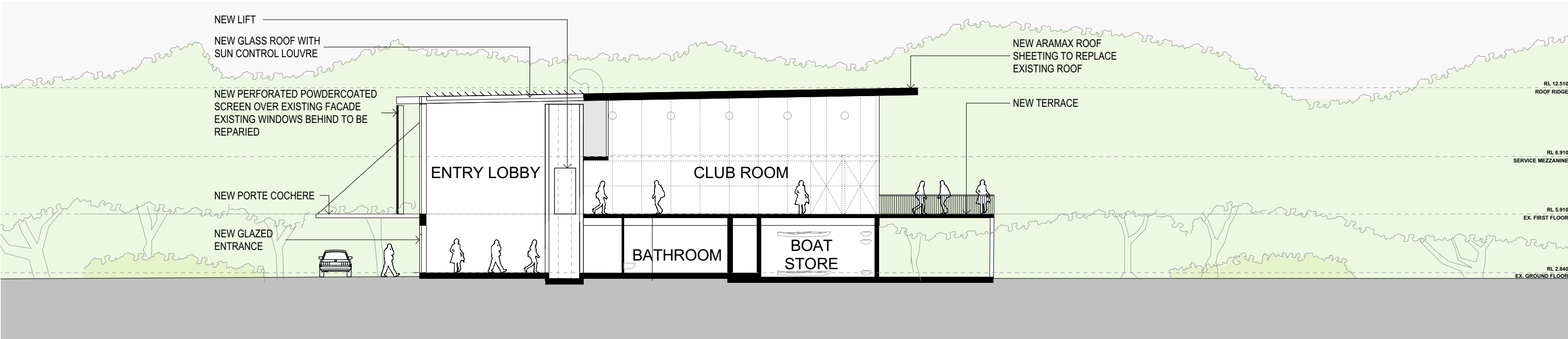


PAINTED BRICK



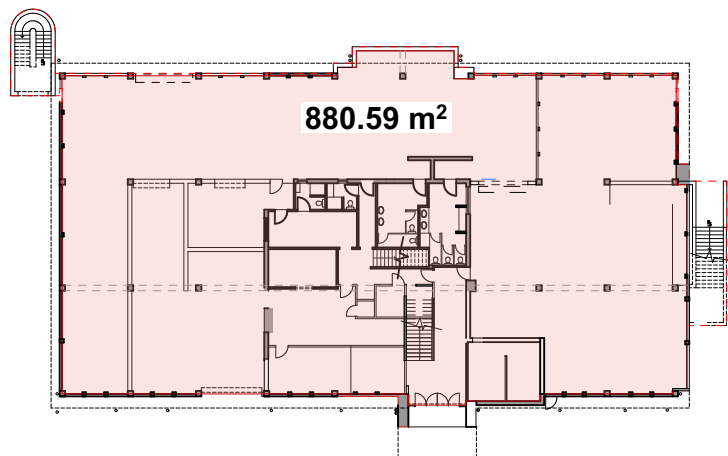


Proposed Section A
1:200

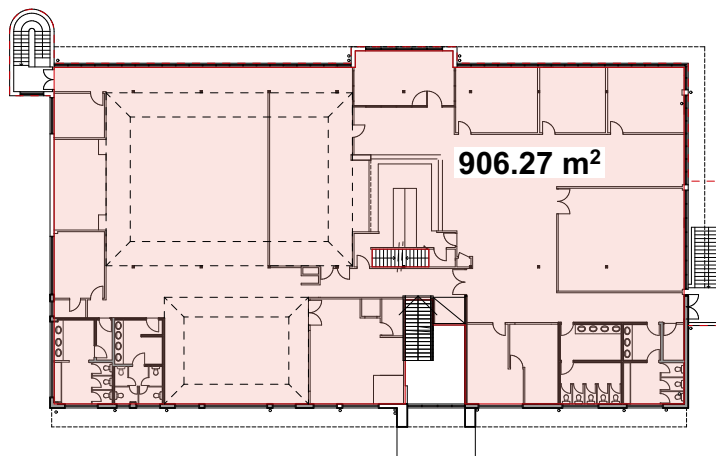


Proposed Section B
1:200





Ground Existing GFA
1:500



Level 01 Existing GFA
1:500

LEGEND



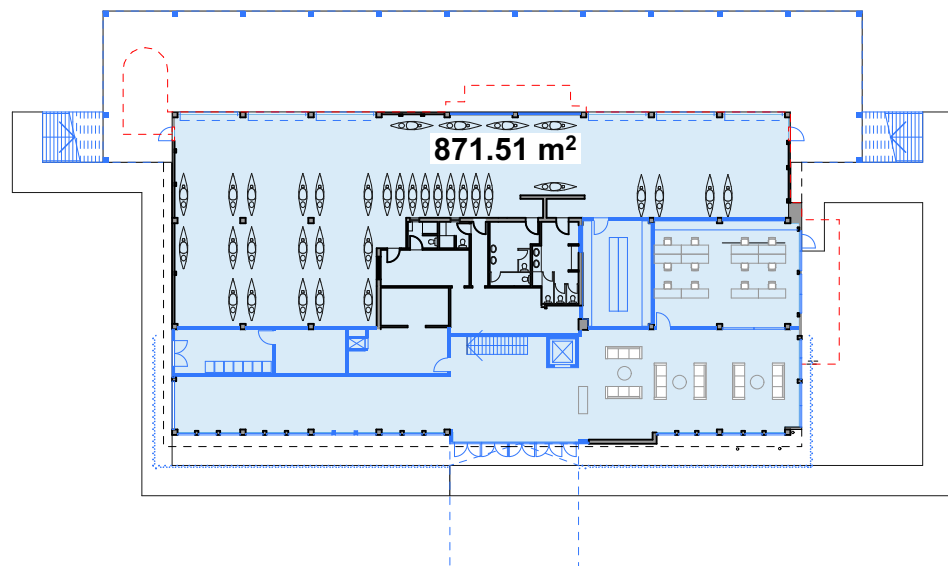
EXISTING GFA



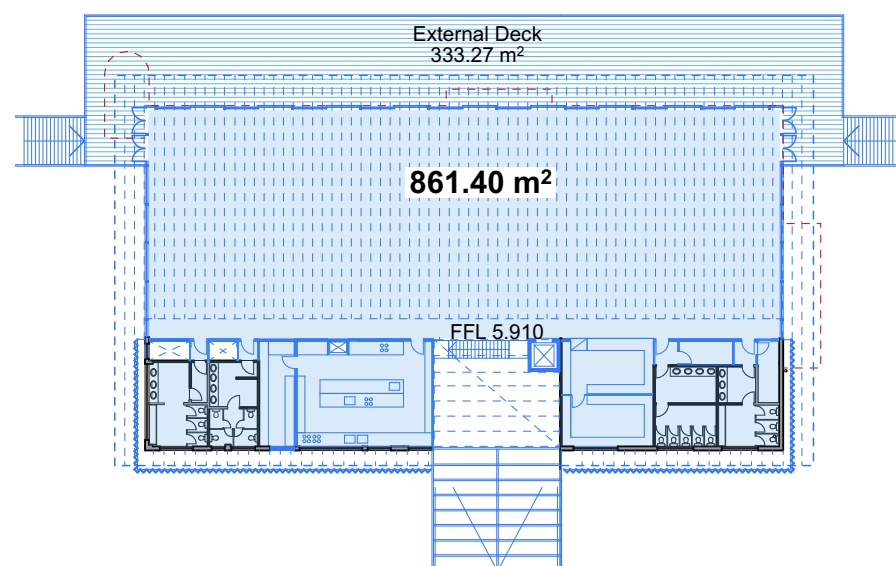
PROPOSED GFA

GFA Area Schedule

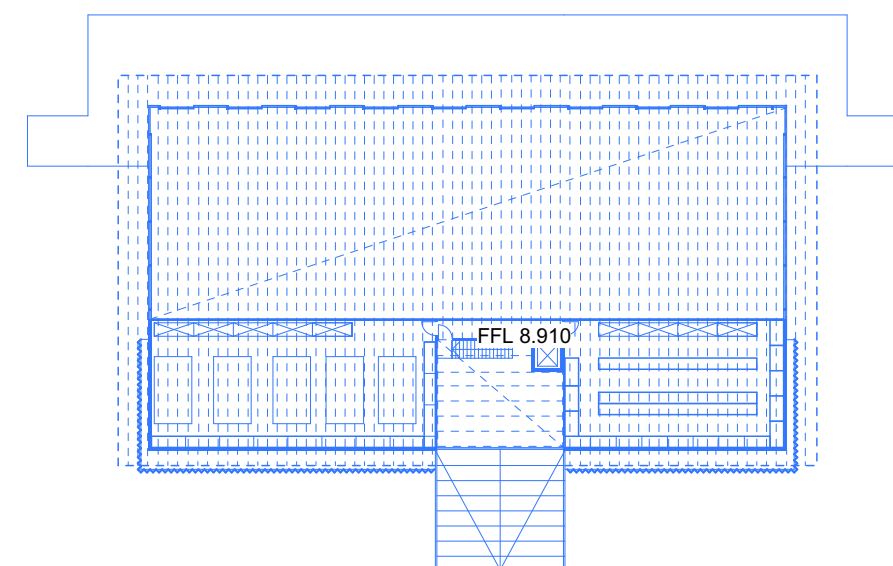
Level	Existing GFA	Proposed GFA
Ground	880.59	871.51
Level 01	906.27	861.40
Total	1786.86 m²	1732.91 m²



Ground Proposed GFA
1:500



Level 01 Proposed GFA
1:500



Plantroom Proposed GFA
1:500

Rev
00

Description
DA Submission

Date
12/08/2024

DA SUBMISSION



Lippmann

Lippmann Partnership ABN 64 077 405 273
NSW Architects Registration Board No. 4656
570 Crown Street, Surry Hills, NSW, 2010

Project
31 Webster St, Milperra, NSW

Title
GFA Plan

Scale
1:500

Dwg
A15

Rev
00